

CREATE A PENCIL SKETCH FROM A PHOTO

Creating a Unique Look

How about this? Take an ordinary photo, and give it a look that's not photographic at all. You can do this by duplicating a layer here and there, changing the color mode, applying a filter, and then selectively restoring color. (How much you restore is entirely up to you!)

QUICK TIP

As you work through each exercise, carefully examine the Layers palette shown in the figure of the completed project. It may help you understand the steps that were taken to achieve the final product.

Preparing for Magic

Figure PP-4 contains an ordinary portrait photo, but watch what happens. First, you turn this color image to grayscale mode (discarding the color information), then duplicate the existing background layer. Next, you invert the duplicate layer. This process (which you achieve by clicking Image on the menu bar, pointing to Adjustments, then clicking Invert) flips

the colors or tones of the active layer, so whatever is dark becomes light. Change the Blending Mode to Color Dodge. Don't panic: it looks like your image has disappeared, doesn't it? But apply a Gaussian Blur and a pencil-like sketch will be visible. Pretty cool, huh?

Using the History Brush Tool

You might be satisfied with the image the way it is, but wait — there's more! To add a little more pizzazz, you can selectively reapply some color. First, flatten the image, then change the mode back to RGB color. Now we're going to see some magic! Select the History Brush Tool from the toolbox and selectively paint areas in the image. In Figure PP-5, for example, the face and hair are painted, but you could paint any areas you want.

QUICK TIP

The History Brush Tool is a source of earlier pixel data, but can only be used within a single image.

FIGURE PP-4

Project 1 – Beginning

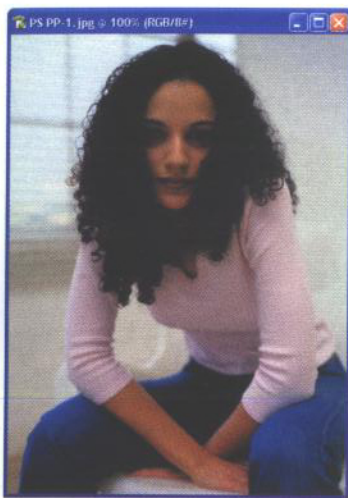


FIGURE PP-6

Project 1 – Portfolio Sample

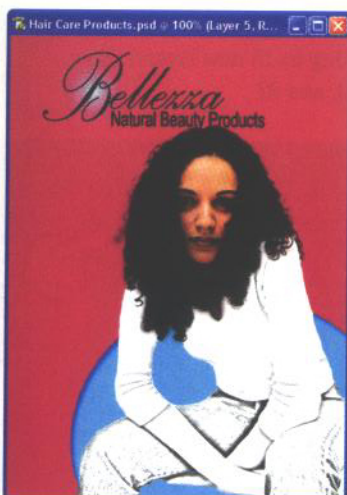
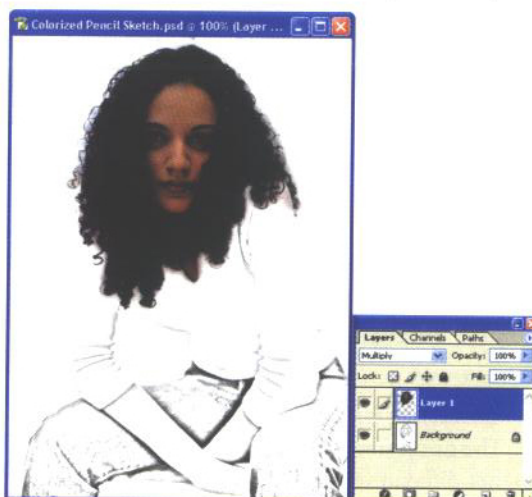


FIGURE PP-5

Project 1 – Completed



Create a pencil sketch effect

1. Open PS PP-1.jpg from the location where your Data Files are stored, then save it as **Colorized Pencil Sketch.psd**.
2. Use the following suggestions to guide you through completing the project:
 - Change the image mode to Grayscale.
 - Duplicate the background layer, then rename the duplicate.
 - Invert the new layer (click Image on the menu bar, point to Adjustments, then click Invert), then change the blending mode to Color Dodge.
 - Add a Gaussian Blur filter. (A setting of 4 is used in the sample.)
 - Flatten the image, then change the mode to RGB Color.
 - Create a new layer, then set the blending mode to Multiply.
 - Use the History Brush to paint the woman's face hair, and neck.
3. Save your work, then compare your image to Figure PP-5.

Figure PP-6 shows how this image might be used in a marketing piece to promote a product. In this example, a mask was added to create the illusion of a chair, and type was added along with a lens flare filter.

You saved a digital image as a Photoshop file, changed the image mode, applied a filter, flattened the image, then used the History Brush to selectively restore color to the image.